

RESEARCH

Open Access



# Morphological variation in *Cynodon dactylon* (L.) Pers., and its relationship with the environment along a longitudinal gradient

Miaoli Wang<sup>1</sup>, Jingxue Zhang<sup>1</sup>, Zhipeng Guo<sup>1</sup>, Yongzhuo Guan<sup>1</sup>, Gen Qu<sup>1</sup>, Jianyu Liu<sup>1</sup>, Yuxia Guo<sup>1\*</sup> and Xuebing Yan<sup>2\*</sup>

## Abstract

**Background:** Geographical variation in morphological traits may reflect evolutionary patterns of morphological adaptability along environmental gradients. Comprehensive information on longitudinal patterns of morphological trait variation is very meaningful to explore morphological diversity and evolutionary trends in widespread bermudagrass.

**Methods:** To explore the spatial patterns of morphological traits, we investigated 10 morphological traits of bermudagrass and 10 soil nutrient indexes and collected local climate data for 13 different regions from 119°E to 105°E along the latitude 34°N.

**Results:** Considerable variations in morphological traits were observed at different longitudes, and the variations in most of the evaluated traits within populations were lower than those among populations. All of the 13 different longitudinal sites were divided into three groups based on morphological traits by cluster analysis. The major sources of diversity at the different longitudes were leaf length of the erect shoot, leaf width of the erect shoot, and the internode lengths of the erect shoot and stolon as determined by principal component analysis. Pearson correlation analysis also indicated that longitude was significantly and negatively correlated with these traits as well. Mean average rainfall was significantly correlated with leaf length of the erect shoot and the internode lengths of the erect shoot and stolon, while mean average temperature was only significantly correlated with internode length of the erect shoots. Available sulfur was significantly correlated with internode length of the erect shoot, plant height, and reproductive branch height, while the exchangeable Ca was significantly correlated with internode lengths of the erect shoot and stolon. Soil pH was significantly correlated with the internode length of the stolon. Longitude is an important factor that affects morphological trait variation in wild bermudagrass, and the leaves of the erect shoot and the internode length enlarged significantly with the collection sites moving from east to west.

**Conclusion:** Different combinations and interactions of environmental factors (soil and climate) along a longitudinal gradient may have strong effects on one or more morphological traits of bermudagrass.

**Keywords:** *Cynodon dactylon*, Wild beomudagrass, Longitude, Phenotypic plasticity, Soil nutrients, Climate

\* Correspondence: [yuxiagu@163.com](mailto:yuxiagu@163.com); [yxbjzz@163.com](mailto:yxbjzz@163.com)

<sup>1</sup>College of Animal & Veterinary Science, Henan Agricultural University, Zhengzhou 450002, China

<sup>2</sup>College of Animal Science and Technology, Yangzhou University, Yangzhou 225000, China



## Background

Phenotypic plasticity is a widespread and important phenomenon that allows plants to adapt to the environment, and the adaptive mechanism may be related to the specific environments in which the plants live; that is, different environments may select for plants that have different phenotypic plasticity mechanisms [1–4]. It is generally accepted that fluctuating environmental conditions play a key role in the morphological variation in plants [5, 6]. Morphological variation in plants is generally a feedback for the changing climatic conditions and reflects the adaptive evolution [7–12], while the soil factor has apparently shown to be a driving force to determine the morphological traits of plants [13–16]. Morphological variation can evolve in response to environmental variability and may show clear patterns in geographical regions; for example, the distribution of *Drosophila* species is implicated in its innate thermal tolerance limits, and a majority of measured morphological traits of *Sorghum bicolor* Moench show significant regional differences, etc. [17–20]. However, few studies have addressed whether plant species would show appreciable changes or a significant pattern of morphology along a longitudinal gradient. The climatic variability hypothesis suggests that individuals of a species may exhibit larger morphological variation with increasing climatic variability, which could happen in areas of lower precipitation at decreased longitude [21, 22]. The leaf length and width of *Pistacia atlantica* Desf. subsp. *atlantica* were found to be significantly related to precipitation, and precipitation is the major factor that determines plant functional traits in *Stipa* species [23, 24]. It is generally accepted that precipitation varies considerably with changes in longitude in many areas of the world. In the climate of China, precipitation also decreases linearly with increasing longitude from east to west in regions far from the sea [25]. At present, there is no information about the effects of climatic changes on morphological traits in widespread plant species, which makes it unclear how plants adapt to regular changes in climate, especially precipitation.

Bermudagrass, *Cynodon dactylon* (L.) Pers., is an important perennial grass species in the botanical family Poaceae [26]. Originally native to Africa, *C. dactylon* has become naturalized in many places around the world and is widely distributed in tropical, subtropical, and temperate coastal areas [27]. *C. dactylon* has the advantages of strong viability, rapid reproduction, and resistance to trampling, making it a suitable grass for lawns, livestock forage, soil conservation, and remediation of contaminated soils [12, 13]. As early as the 1960s, researchers at Oklahoma State University divided *C. dactylon* germplasm into six variants based on their growth habits, leaf color, plant type, and somatic chromosome count [14]. Bermudagrass was also divided into four biological types based on external morphological traits

including leaf color, stem color, and shaped type in Mauritius [28]. Harlan et al. (1970) divided the *C. dactylon* collections from around the world into nine species and 10 variants, and Taliaferro reviewed and revised the taxonomy of *C. dactylon* [14, 29]. In the previous studies that explored the geographical clines in morphology for *C. dactylon*, most were focused on different habitats [30]. We can ask two questions; (1) how does the widespread *C. dactylon* adapt to the environmental changes along a longitudinal cline by morphological variation? And (2) what relationships are there between morphological traits and climate? At present, no studies have been conducted on morphological variation in *C. dactylon* that are strictly related to different longitudes to answer these questions. Thus, in our study, we measured 10 quantitative morphological traits in plants of *C. dactylon* collected from locations at 13 different longitudes and analyzed the relationships between these variations and the local soil and climatic conditions. The objectives of this research were to i) analyze the variability in 10 quantitative morphological traits of *C. dactylon* collected at sites representing 13 different longitudes, ii) explore the pattern of morphological variation among and within populations, and iii) evaluate the relationships between morphological traits, soil, and climate at the different longitudes.

## Material and methods

### Plant material

In August 2016, a total of 260 wild bermudagrass individuals were sampled as representatives of 13 populations growing in regions at different longitudes from 119°E to 105°E along latitude 34°N in southern China (Table 1). Meteorological data, including the mean average rainfall (MAR) and the mean average temperatures (MAT) over thirty years (1981–2010) were recorded for the 13 sampled regions (Table 1).

### Morphological trait data collection

The morphological characters, including leaf length of the erect shoot (LLES), leaf width of the erect shoot (LWES), internode length of the erect shoot (ILES), diameter of the erect shoot (DES), leaf length of the stolon (LLS), leaf width of the stolon (LWS), internode length of the stolon (ILS), diameter of the stolon (DS), plant height (PHT), and reproductive branch height (RBH) were measured for 20 individual plants per site. The sampling method was as described in our previous study [31]. The samples were measured with the aid of a caliper during the highest growth period in August. The fourth mature leaf from the top of the erect shoot to the base was selected for measurement of LLES and LWES, and the fourth section stems from the top of the erect shoot to the basal part were used for measurement of

**Table 1** Geographical and climatic factors of bermudagrass in 13 different longitude regions

| Code | Region      | Habitat    | Longitude (E) | Latitude (N) | Altitude (m) | MAT (°C) | MAR (mm) |
|------|-------------|------------|---------------|--------------|--------------|----------|----------|
| 1    | Lianyungang | Island     | 119°27'06"    | 34°46'09"    | 50           | 14.5     | 883.9    |
| 2    | Tancheng    | Roadside   | 118°16'08"    | 34°38'37"    | 30           | 13.8     | 832.9    |
| 3    | Zaozhuang   | Roadside   | 117°49'20"    | 34°38'48"    | 89           | 14.4     | 820.3    |
| 4    | Shanxian    | Roadside   | 116°09'11"    | 34°46'31"    | 30           | 14.2     | 621.4    |
| 5    | Lankao      | Roadside   | 114°44'55"    | 34°49'32"    | 60           | 14.3     | 631.1    |
| 6    | Zhengzhou   | Roadside   | 113°38'20"    | 34°54'04"    | 90           | 14.7     | 640.8    |
| 7    | Luoyang     | Roadside   | 112°19'30"    | 34°43'20"    | 210          | 14.4     | 637.2    |
| 8    | Sanmenxia   | Roadside   | 111°03'49"    | 34°42'29"    | 340          | 14.0     | 558.1    |
| 9    | Tongguan    | Roadside   | 110°13'18"    | 34°33'41"    | 540          | 13.1     | 602.9    |
| 10   | Jingyang    | Roadside   | 108°50'07"    | 34°32'32"    | 410          | 13.5     | 504.1    |
| 11   | Fufeng      | Roadside   | 107°52'41"    | 34°20'35"    | 570          | 12.8     | 569.9    |
| 12   | Baoji       | Ditch side | 107°41'03"    | 34°21'54"    | 630          | 13.5     | 645.9    |
| 13   | Tianshui    | Roadside   | 105°57'34"    | 34°32'43"    | 1050         | 11.4     | 500.7    |

MAT mean average rainfall; MAR mean average temperature

DES and ILES. The methods used to measure the stolon characters LLS, LWS, DS, and ILS were identical to those used to measure the erect shoot above. The natural height of bermudagrass was measured for PHT, and the vertical height from the surface to the natural top of the reproductive branch was measured for RBH. The values for 10 quantitative morphological traits were used for further data analysis. The climate data for the sampling sites was obtained from the website of the China meteorological data network.

#### Soil chemical characteristics

The soil samples (0–20 cm depth) were collected separately under the cover of the wild bermudagrass from 20 corresponding quadrats (10 m × 10 m) at each site, and the soil was collected using the principle of multi-point sampling. The soil samples were taken within different quadrats and mixed at each site. The samples were then sealed in polyethylene bags using the quarterly method to divide the soil into portions of approximately 1 kg. In order to facilitate the different analyses that require grinding and screening, the collected soil samples were transported to the laboratory and allowed to air-dry at 25 °C. The soil samples were analyzed for total nitrogen (TN), available nitrogen (AN), available sulfur (AS), available kalium (AK), available phosphate (AP), soil organic matter (SOM), exchangeable Ca, exchangeable Na, exchangeable Mg, and pH based on standard methodologies [32]. Briefly, the SOM was determined by the potassium dichromate wet combustion procedure. TN and AN were analyzed using the Kjeldahl method and the alkaline nitrogen diffusion method, respectively. The AS, AK, AP were determined using the barium chloride turbidimetric method, flame emission spectrometry and Olsen method, respectively. The exchangeable Ca, exchangeable Na, and

exchangeable Mg were measured by continuum-source atomic-absorption spectrometry. Soil pH was tested with a glass electrode (soil to water ratio = 1:2.5).

#### Statistical analysis

The statistical parameters including maximum, minimum, mean, standard deviation (SD), and coefficient of variation (CV) for each trait at each longitude site were estimated by using EXCEL. Nested variation analysis was used to calculate the significance among populations and within populations for 10 morphological traits of wild bermudagrass, which were collected from 13 different sites. Within-population and among-population variance components were calculated to determine the percentage of variability owing to the longitude and the local micro-environmental changes (SPSS 22.0). We explored the relationships between morphological traits, longitude, soil, and climate by Pearson's correlation analysis and presented resulted by HemI 1.0.3.3 software. The 13 different longitude sites were clustered based on the 10 morphological traits using cluster analysis (CA). Principle component analysis (PCA) of the 10 morphological traits was used to evaluate the diversity of morphological traits in bermudagrass. Figures were drawn with Sigmaplot 10.0 (Systat Software Inc.) and the R package.

#### Results

Descriptive statistics of morphological traits and soil nutrients along a longitudinal gradient.

The maximum, minimum, mean, SD, and CV of 10 morphological traits at each site are given in Table 2. The CVs for the 10 traits ranged from 13.78% (LWES) to 34.13% (LLES). The CV values for LLES, ILES, LLS, ILS, PHT, and RBH were > 20%, meaning that there were larger morphological variations in those traits along the

**Table 2** Average values for morphological traits of bermudagrass germplasm collected at 13 different longitudinal sites along latitude 34°N

| Code    | LLES (mm) | LWES (mm) | ILES (mm) | DES (mm) | LLS (mm) | LWS (mm) | ILS (mm) | DS (mm) | PHT (cm) | RBH (cm) |
|---------|-----------|-----------|-----------|----------|----------|----------|----------|---------|----------|----------|
| 1       | 53.48     | 2.81      | 23.76     | 0.99     | 73.08    | 3.23     | 35.29    | 1.00    | 18.93    | 19.51    |
| 2       | 43.34     | 2.44      | 20.92     | 0.74     | 50.58    | 2.66     | 34.24    | 0.94    | 17.20    | 16.37    |
| 3       | 40.56     | 2.25      | 20.89     | 0.68     | 47.81    | 2.60     | 26.48    | 0.80    | 16.25    | 16.20    |
| 4       | 49.11     | 1.94      | 21.77     | 0.60     | 39.75    | 2.21     | 40.10    | 0.77    | 16.30    | 15.25    |
| 5       | 61.34     | 2.66      | 40.10     | 0.75     | 95.15    | 2.95     | 47.00    | 0.86    | 38.05    | 31.04    |
| 6       | 67.51     | 2.77      | 36.04     | 0.95     | 74.63    | 3.03     | 51.17    | 1.16    | 19.48    | 23.90    |
| 7       | 42.49     | 2.49      | 28.30     | 0.78     | 48.18    | 2.60     | 45.53    | 0.83    | 18.74    | 17.73    |
| 8       | 51.49     | 3.42      | 35.74     | 1.11     | 40.19    | 3.44     | 67.31    | 1.43    | 21.90    | 19.56    |
| 9       | 41.60     | 2.32      | 31.62     | 0.75     | 33.95    | 2.46     | 39.65    | 0.81    | 16.35    | 16.14    |
| 10      | 67.83     | 2.83      | 36.71     | 0.76     | 74.56    | 3.35     | 66.22    | 0.96    | 22.45    | 20.09    |
| 11      | 64.52     | 3.11      | 33.11     | 0.84     | 57.16    | 3.13     | 54.17    | 1.15    | 20.80    | 17.20    |
| 12      | 66.54     | 3.18      | 32.29     | 0.89     | 85.19    | 3.43     | 52.80    | 0.98    | 16.15    | 22.11    |
| 13      | 81.07     | 3.40      | 51.69     | 0.94     | 95.64    | 2.66     | 68.62    | 1.16    | 26.00    | 27.93    |
| Maximum | 81.07     | 3.42      | 51.69     | 1.11     | 95.64    | 3.44     | 68.62    | 1.43    | 38.50    | 31.04    |
| Minimum | 40.56     | 1.94      | 20.89     | 0.60     | 33.95    | 2.21     | 26.48    | 0.77    | 16.15    | 15.25    |
| Mean    | 56.22     | 2.74      | 31.76     | 0.83     | 62.76    | 2.90     | 48.35    | 0.99    | 20.66    | 20.23    |
| SD      | 12.83     | 0.45      | 8.85      | 0.14     | 21.42    | 0.40     | 13.39    | 0.19    | 6.01     | 4.85     |
| CV (%)  | 22.82     | 16.52     | 27.85     | 16.98    | 34.13    | 13.78    | 27.70    | 19.37   | 29.08    | 23.97    |

LLES leaf length of the erect shoot; LWES leaf width of the erect shoot; ILES internode length of the erect shoot; DES diameter of the erect shoot; LLS leaf length of the stolon; LWS leaf width of the stolon; ILS internode length of the stolon; DS diameter of the stolon; PHT plant height; RBH reproduction branch height

longitudinal gradient. The CV values for LWES, DES, LWS, and DS were < 20% but > 10%, which means that there were smaller morphological variations in these traits along the longitudinal gradient, and the CV values for the length and height characters were greater than for the width characters. Observable morphological variation existed in bermudagrass along the longitudinal gradient, and the 10 quantitative traits showed moderate and higher morphological variation.

The mean values for the soil nutrient contents at the different longitude sites are shown in Table 3. There was no obvious distribution pattern for soil nutrients along the longitudinal gradient. The soil nutrient CVs were very high, and all indexes were > 27% along the longitudinal gradient. The CV values were in the following relative order: AP > exchangeable Mg > AS > exchangeable Na > AK > exchangeable Ca > SOM > TN > AN > pH. In addition, the variation in pH had almost no effect compared to the magnitude of the environmental changes along the longitudinal gradient.

Variation in morphological traits among and within populations.

The term “population” means that all individuals of the same species occupy a certain space in a certain period of time. We considered the samples collected in each site as representative of 13 populations in this study. High and significant levels of variation were found

among and within populations for most measured traits ( $P < 0.01$ ), and only LWS and DS showed no significant differences within populations (Table 4). The values of the variance components for all morphological traits among populations were > 15% and the range of changes was from 15.66% (LLES) to 51.53% (PHT). The morphological trait variation was mainly controlled by longitude and environmental factors among the populations. LWS had the lowest variance component value (5.26%), while DS had the highest variance component (49.72%) within populations. The variance components of the other traits ranged from 10 to 23% within populations, which indicated that the traits with lower variance component values within populations showed less genetic variation. Results from nested variation analysis showed that the variance components of morphological traits among individuals within populations were generally lower than those among populations.

#### Correlation analysis

There were significant correlations between the tested traits (Fig. 1). The results showed that leaf width traits were positively and significantly correlated with diameter traits in most cases. LLES and ILES were significantly correlated with LLS and ILS, separately. In addition, the height traits (PHT and RBH) showed positive and significant correlations with ILES and LLS. The results of

**Table 3** Soil nutrient contents and pH at 13 collection sites for wild bermudagrass at different longitudes along latitude 34°N

| Code    | TN<br>(g·kg <sup>-1</sup> ) | AN<br>(mg·kg <sup>-1</sup> ) | SOM<br>(g·kg <sup>-1</sup> ) | AK<br>(mg·kg <sup>-1</sup> ) | AS<br>(mg·kg <sup>-1</sup> ) | AP<br>(mg·kg <sup>-1</sup> ) | Exchangeable Ca<br>(g·kg <sup>-1</sup> ) | Exchangeable Na<br>(g·kg <sup>-1</sup> ) | Exchangeable Mg<br>(g·kg <sup>-1</sup> ) | pH   |
|---------|-----------------------------|------------------------------|------------------------------|------------------------------|------------------------------|------------------------------|--|--|--|------|
| 1       | 0.87                        | 110.50                       | 18.70                        | 122.00                       | 2.02                         | 12.30                        | 0.90                                     | 0.12                                     | 0.13                                     | 6.72 |
| 2       | 1.35                        | 127.00                       | 32.35                        | 285.00                       | 3.88                         | 68.95                        | 2.80                                     | 0.13                                     | 0.25                                     | 6.87 |
| 3       | 1.26                        | 102.50                       | 28.30                        | 203.00                       | 2.81                         | 17.25                        | 2.59                                     | 0.08                                     | 0.42                                     | 6.87 |
| 4       | 1.50                        | 120.00                       | 33.85                        | 243.00                       | 3.38                         | 25.30                        | 6.11                                     | 0.08                                     | 0.26                                     | 6.98 |
| 5       | 1.07                        | 83.50                        | 23.10                        | 265.00                       | 8.13                         | 26.00                        | 5.81                                     | 0.32                                     | 0.54                                     | 7.39 |
| 6       | 1.11                        | 91.50                        | 17.00                        | 329.00                       | 3.85                         | 78.10                        | 4.46                                     | 0.20                                     | 0.36                                     | 6.75 |
| 7       | 2.09                        | 101.00                       | 40.25                        | 490.00                       | 6.60                         | 31.40                        | 8.30                                     | 0.09                                     | 0.23                                     | 7.37 |
| 8       | 1.09                        | 89.00                        | 25.85                        | 476.00                       | 4.61                         | 23.70                        | 8.89                                     | 0.12                                     | 0.33                                     | 7.47 |
| 9       | 1.17                        | 109.50                       | 21.95                        | 293.00                       | 3.23                         | 56.60                        | 7.73                                     | 0.10                                     | 0.14                                     | 7.50 |
| 10      | 0.89                        | 71.00                        | 24.00                        | 743.00                       | 3.30                         | 42.50                        | 8.63                                     | 0.23                                     | 0.76                                     | 7.87 |
| 11      | 0.90                        | 169.50                       | 15.60                        | 215.50                       | 3.23                         | 34.00                        | 9.53                                     | 0.09                                     | 0.24                                     | 7.69 |
| 12      | 2.04                        | 93.00                        | 46.10                        | 481.00                       | 2.95                         | 68.70                        | 8.30                                     | 0.15                                     | 0.37                                     | 6.87 |
| 13      | 1.16                        | 170.00                       | 31.95                        | 199.50                       | 9.73                         | 19.40                        | 8.96                                     | 0.27                                     | 0.25                                     | 7.21 |
| Maximum | 2.09                        | 170.00                       | 46.10                        | 743.00                       | 9.73                         | 78.10                        | 9.53                                     | 0.32                                     | 0.76                                     | 7.87 |
| Minimum | 0.87                        | 71.00                        | 15.60                        | 122.00                       | 2.02                         | 12.30                        | 0.90                                     | 0.08                                     | 0.13                                     | 6.72 |
| Mean    | 1.27                        | 110.62                       | 27.62                        | 334.23                       | 4.44                         | 38.78                        | 6.39                                     | 0.15                                     | 0.33                                     | 7.20 |
| SD      | 0.40                        | 30.22                        | 9.07                         | 169.50                       | 2.29                         | 22.12                        | 2.86                                     | 0.08                                     | 0.17                                     | 0.38 |
| CV(%)   | 31.24                       | 27.32                        | 32.84                        | 50.71                        | 51.62                        | 57.04                        | 44.85                                    | 51.50                                    | 51.99                                    | 5.27 |

TN total nitrogen; AN available nitrogen; SOM soil organic matter; AK available potassium; AS available sulfur; AP available phosphate

correlation analyses between longitude and 10 morphological traits of bermudagrass showed that there were significant correlations for some morphological traits such as LLES ( $P < 0.05$ ), LWES ( $P < 0.05$ ), ILES ( $P < 0.01$ ), and ILS ( $P < 0.01$ ), and all tested traits were negatively correlated with longitude (Fig. 2). Thus, the larger morphological traits were associated with lower longitudes; the leaves on the erect shoots were wider, and internodes were longer in bermudagrass with decreasing longitude. LLES ( $P < 0.05$ ), ILES ( $P < 0.01$ ), and ILS ( $P <$

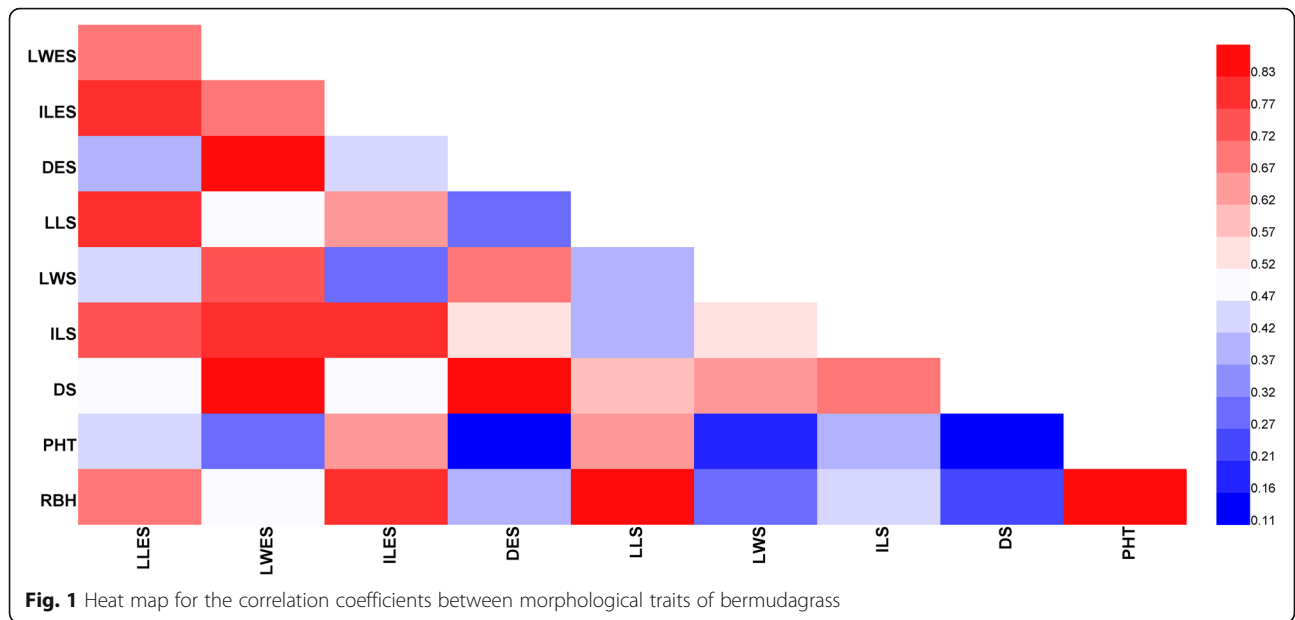
0.01) were significantly and negatively correlated with MAR, and ILES ( $P < 0.05$ ) was significantly and negatively correlated with MAT, which implied that bermudagrass has longer leaves and internodes in areas with colder temperatures with less rainfall.

ILES ( $P < 0.05$ ) and ILS ( $P < 0.01$ ) displayed positive and significant correlations with exchangeable Ca, and ILS ( $P < 0.05$ ) was significantly and positively correlated with pH, which indicates that longer internodes are positively associated with higher contents of exchangeable

**Table 4** ANOVA for 10 morphological traits among and within 13 populations of wild bermudagrass

| Traits | Mean square (df)         |                        |        | F       | Ind (pop) <sup>b</sup> | Variance component (%)   |                        |
|--------|--------------------------|------------------------|--------|---------|------------------------|--------------------------|------------------------|
|        | Populations <sup>a</sup> | Ind (pop) <sup>b</sup> | Error  |         |                        | Populations <sup>a</sup> | Ind (pop) <sup>b</sup> |
| LLES   | 3424.66                  | 747.60                 | 541.18 | 5.77**  | 1.38*                  | 15.66                    | 14.06                  |
| LWES   | 4.04                     | 0.32                   | 0.22   | 18.83** | 1.49*                  | 41.30                    | 10.87                  |
| ILES   | 1638.69                  | 379.50                 | 0.05   | 6.60**  | 1.53**                 | 16.69                    | 17.85                  |
| DES    | 0.41                     | 0.82                   | 637.54 | 7.88**  | 1.60**                 | 19.51                    | 17.08                  |
| LLS    | 9016.14                  | 983.78                 | 0.25   | 14.14** | 1.54**                 | 33.48                    | 13.75                  |
| LWS    | 3.98                     | 0.29                   | 353.60 | 16.08** | 1.17                   | 40.35                    | 5.26                   |
| ILS    | 3931.52                  | 586.11                 | 353.60 | 11.12** | 1.66**                 | 26.22                    | 15.75                  |
| DS     | 0.70                     | 0.08                   | 0.06   | 11.61** | 1.31                   | 17.13                    | 49.72                  |
| PHT    | 743.18                   | 43.10                  | 21.72  | 34.21** | 1.98**                 | 51.53                    | 16.11                  |
| RBH    | 419.40                   | 97.86                  | 56.12  | 7.47**  | 1.74**                 | 17.33                    | 22.49                  |

Note: \*, \*\*: significant differences at probabilities of 0.05 and 0.01, respectively  
Populations<sup>a</sup> stands for among populations; Ind (pop)<sup>b</sup> stands for within populations

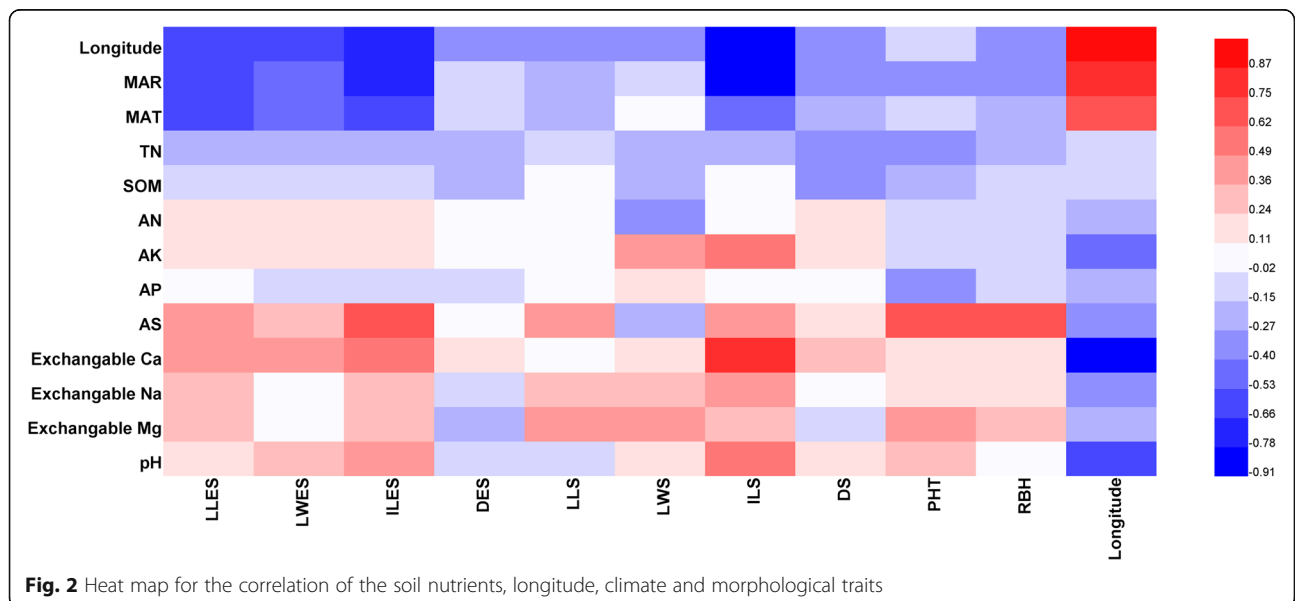


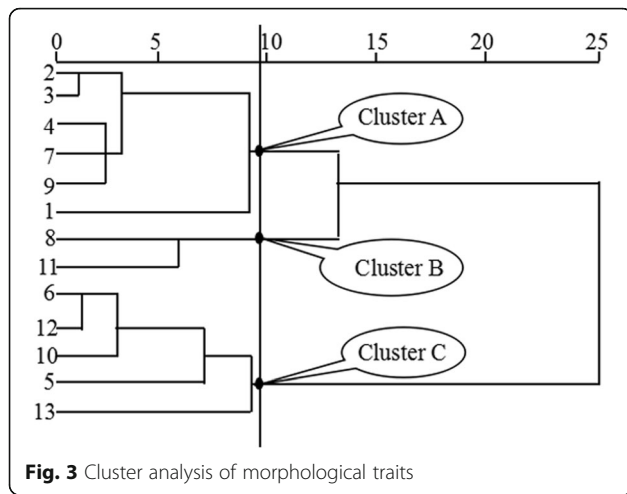
Ca and higher pH. ILES ( $P < 0.01$ ), PHT ( $P < 0.01$ ), and RBH ( $P < 0.01$ ) were significantly and negatively correlated with AS, which shows that plants of bermudagrass were taller with increasing AS content. In addition, the leaf width of the stolon and stolon diameter did not show significant correlations with any geo-climatic or soil parameters.

**Cluster analysis and principal component analysis of morphological traits**

Figure 3 shows a dendrogram based on the cluster analysis of the morphological distance matrix for the 13 different longitudes. These different regions were divided

into three clusters: the morphological traits included in clusters A, B, and C were in accordance with the approximate longitudes. Also, the bermudagrass populations were divided into many sub-populations by the complex environmental and geographical factors, which were observed at both low and high longitudes. Sites 1, 2, 3, 4, 7, and 9 grouped together in cluster A. This cluster contained plants with the minimum values of the morphological traits; plants were short with and narrow leaves and stems, except for plant height, which belonged to the dwarf and thin type. Sites 8 and 11 were included in cluster B. The bermudagrass plants in cluster B differed from the others by their maximum leaf width





**Fig. 3** Cluster analysis of morphological traits

and diameter characteristics, which had the best creeping characters and belonged to the type of middle and wide. Cluster C consists of populations 5, 6, 10, 12, and 13 that had best upright characters and belonged to the tall and stocky plant type, because the plants in Cluster C had the maximum values for LLES, LLES, ILES, ILS, PHT, and RBH.

To estimate the relative significance of the evaluated traits and the longitudinal variation, we performed principal component analysis based on the 10 morphological traits. The PCA results showed that the first two PC axes (PC1 and PC2) explained 80.5% of the total multivariate variation (Table 5). The relatively large load in PC1 are LWES, ILES, LLES and ILS, and when the relatively large load in PC2 were PHT, DS, DES and RBH. The contribution of PC1 (60.03%) was much greater than that of PC2 (20.47%). Along the longitude gradient, morphological diversity in bermudagrass was mainly due to

**Table 5** Component matrix for principal component analysis (PCA) of the 10 morphological traits in bermudagrass

| Traits | Principal components |        |
|--------|----------------------|--------|
|        | PC1                  | PC2    |
| LLES   | 0.862                | 0.210  |
| LWES   | 0.902                | -0.353 |
| ILES   | 0.868                | 0.259  |
| DES    | 0.715                | -0.568 |
| LLS    | 0.736                | 0.507  |
| LWS    | 0.672                | -0.424 |
| ILS    | 0.835                | -0.154 |
| DS     | 0.731                | -0.592 |
| PHT    | 0.592                | 0.608  |
| RBH    | 0.778                | 0.556  |

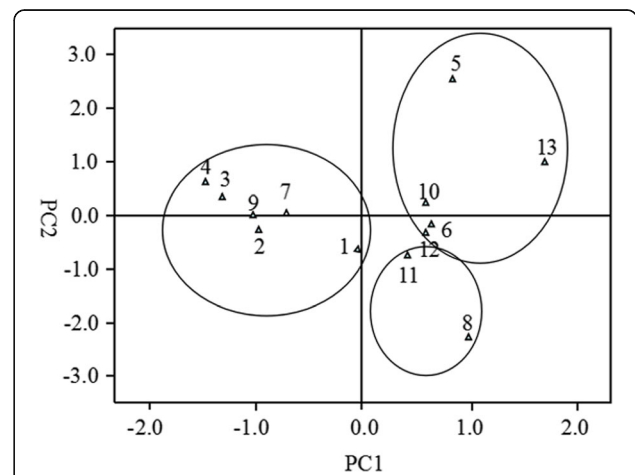
Note: PC1 explained 60.03% of the variance, and PC2 explained 20.47% of the variance

LWES, ILES, LLES, and ILS in PC1. In order to investigate the relationships between longitude and morphological traits and to determine the morphological variability, we calculated the Euclidean distances. The distribution of sites along the first two principle component axes partition similar groups, which confirmed the results of the cluster analysis (Fig. 4).

**Discussion**

**The relationships between morphological traits and longitude**

Previous studies have shown that morphological variations are significantly affected by geographical locations [33–37]. Morphological variation as a response to environmental changes at different geographic positions is common in *C. dactylon* [38, 39]. A study of 260 accessions of bermudagrass germplasm indicated that there is extensive morphological variation in *C. dactylon* populations along longitudinal gradients, which has been found in some other studies [31, 40, 41]. The correlation analysis showed that the traits of width and diameter were seldom significantly correlated with the longitude, soil nurture or climate. It seems these traits may be less susceptible to environmental changes and suggests that the mechanism for stress tolerance is found in bermudagrass, thereby reducing the change of irreversibly responding to varying environmental factors. In the contrast, most of other traits were significant correlated with each other and also significantly related with environment factors. These traits were significantly effected by environment factors including longitude variation so that they had high values in CV along the changes of longitude. Leaf traits of the erect shoot and internode length were significantly affected by longitude, and these traits were also the main source of diversity in bermudagrass populations along a longitudinal gradient, which shows



**Fig. 4** The distribution of bermudagrass populations on the PC1 and PC2 by using principal component

that longitude is an important factor that influences morphological variation in bermudagrass. In general, we observed a trend in which the morphological traits increased in size with decreasing longitude, suggesting that the larger sizes are an adaptation to drought, lower temperatures, and shorter growing seasons as well as longer and deeper periods of dormancy, enabling the plants to survive adverse conditions and to increase their competitive abilities. In many cases, plants are generally smaller and show reduced leaf trait sizes in order to reduce plant transpiration and maintain efficient utilization of the limited water resources under drought conditions [42–44]. Bermudagrass is a widespread species that is adaptable to adverse environments that shows a contrary strategy in morphological traits to adapt to dry and low temperature conditions. However, high temperatures did not cause increases in plant size along a latitudinal gradient in another study [31].

We have identified significant variation in morphological traits in bermudagrass among and within populations, which indicates that the different environments over a large scale had a remarkable influence on the morphological traits (Table 4). Variation in components of morphological traits within populations was lower than that among general populations, which means that longitude is the major factor influencing morphological variation in bermudagrass. Some studies have shown that genetic variation is the main determinant for adaptability of a species within and between populations [45–48]. Morphological variation is commonly influenced by genetic variation, environmental variation, or the interactions between them [4, 49]. Morphological variation in bermudagrass is mainly determined by the influence of longitude in this study, which can enhance the spreading to a large scale likewise.

#### Effect of climatic and soil nutrients on morphological traits in bermudagrass

Previous studies in species such as rice and *Sarracenia purpurea* (pitcher plant) have investigated the spatial patterns of morphological trait variation along geographical gradients, and showed that the geographical patterns are shaped by edaphic and climatic factors [50, 51]. Morphological variations are well documented in many plant species such as *Azalia africana* (African mahogany) and black plum, which are affected by climatic conditions [52–54]. Fruits and leaflets of *A. africana* show significant morphological variation under different climatic conditions [52]. Bejiga et al. (1996) discovered that climatic factors are significantly correlated with seed weight [55]. In our study, longer internodes were found in those areas with lower MAR and MAT. Previous studies showed that internode length in bermudagrass is significantly and negatively related to rainfall and temperature [31]. In areas

with low rainfall and low temperatures, one adaptation mechanism for drought could be an increase in the internode length that would allow the leaf to more effectively absorb resources.

Soil nutrient factors are the most important components of the soil ecosystem and are necessary elements for plant growth [56, 57]. Soil nutrients are affected by many factors, such as climate, topography, microorganisms, and artificial factors [58, 59]. Both exchangeable Ca and pH showed significant variation along the longitudinal gradient, but most soil nutrients did not show an obvious difference. Bermudagrass morphological traits such as height and internode length were significantly affected by AS, exchangeable Ca, and pH in our study.

The combinations of and interactions between environmental factors (soil and climate) and longitude may significantly influence morphological variation in bermudagrass [52, 60]. In this study, a large proportion of the internode lengths in regions 8 and 10 were longer than those in plants in the vicinity, possibly due to the fact that the MAR in these areas was much higher than in the neighboring regions. This suggests that morphological variation in internode length in bermudagrass would arise when the variation in precipitation is abrupt. The higher AS (available sulfur) content of region of 5, which was second only to region of 13, had maximum values for PHT and RBH. This indicates that mid-longitude sites may be accompanied by optimal temperature and precipitation, which could allow soil characteristics to limit and or alter plant productivity.

Impacts of longitude on possible applications, and adaptive evolution of *C. dactylon* populations. The tested traits were separated into three groups by cluster analysis; the dwarf-thin type, the middle-wide type, and the tall-stocky type. The bermudagrass plants in cluster A belong to the dwarf-thin type and can be used for lawns. The bermudagrass plants in cluster B have the best creeping features and are ideal for use in soil conservation and slope protection. The plants in cluster C have the best upright characters and belong to the tall-stocky type, which can be used for livestock forage. The bermudagrass plants in cluster C are mainly concentrated in higher longitude sites with less rainfall, and using this type of bermudagrass in breeding can contribute to conservation and reasonable utilization of precious water resources in arid environments.

The level of morphological variation in bermudagrass was found to be high, which enhances its ability to adapt to different environments along a longitudinal gradient. Compared with the other regions, the morphological traits were obviously different in marginal regions and central areas. The morphological trait sizes were generally larger in the marginal and central longitudes than in the other sampling sites along the longitudinal gradient.



This result is supported by the non-linear trend in morphological trait values with respect to longitude, and the larger sizes of the morphological traits will occur in areas with intermediate and edge longitudes. In Lianyungang, which was highest longitude site of all the selected locations, the sizes of the morphological traits were generally larger than in the neighboring areas. This phenomenon can be explained by the observation that a high level of environmental variability, especially for rainfall, is present in Lianyungang, and it is thought that the highest level of morphological plasticity would occur in peripheral regions rather than in central areas, because environmental variation is probably the highest there [61, 62]. Earlier studies in other species have shown that higher levels of variability would be evident in marginal populations of *Acer platanoides* and *Picea abies* rather than in central populations [62, 63]. We found that two characters, width and diameter, showed a high degree of stability and were rarely affected by longitude and environmental factors, and the maximum values for width and diameter in bermudagrass were found in the middle longitude site Sanmenxia. Higher levels of diversity exist in central populations compared to marginal populations [64]. We can explain the results of our study from the following two perspectives. First, two populations of a species may have expanded their territory during their long-term evolutionary history, and these two populations then form a contact zone at some point in time. If the two populations were genetically differentiated, the species would thus have a higher diversity in the contact area [65]. Second, it has been suggested that high levels of environmental stress in edge sites could reduce morphological plasticity compared to that in central areas [66].

## Conclusions

The pronounced east-to-west longitudinal variations in morphological traits in bermudagrass show that longitude plays a major role in morphological variation. We observed that morphological trait sizes tended to increase with decreasing longitude in order for the plants to adapt to the changing environment, especially LLES, LWES, ILES, and ILS. However, the values for the morphological traits in plants from the edge and central sites were generally higher than in the other sampling locations along the longitudinal gradient because of the edge effects and the founder effects. Different combinations and interactions of environmental factors such as AS, exchangeable Ca, pH, MAT, and MAR at each site may obscure the general trends in trait changes in bermudagrass along the longitudinal gradient. Our research explored the evolutionary trends in morphological trait variation in wild bermudagrass populations along a longitudinal gradient, and provides abundant wild resources

for breeding in bermudagrass. However, there are also shortcomings to this experiment; for example, we did not take into account that the content of soil nutrients could change with the changing of the seasons. Also, DNA molecular marker technology should be used to examine genetic variation in bermudagrass populations from China and other countries where *C. dactylon* grows wild.

## Abbreviations

AK: Available kalium; AN: Available nitrogen; AP: Available phosphate; AS: Available sulfur; CA: Cluster analysis; CV: Coefficient of variation; DES: Diameter of erect shoot; DS: Diameter of stolon; ILES: Internode length of erect shoot; ILS: Internode length of stolon; LLES: Leaf length of erect shoot; LLS: Leaf length of stolon; LWES: Leaf width of erect shoot; LWS: Leaf width of stolon; MAR: Mean annual rainfall; MAT: Mean annual temperature; P: Probability; PCA: Principal component analysis; PHT: Turf height; RBH: Reproductive branch height; SD: Standard deviation; SOM: Soil organic matter; TN: Total nitrogen

## Acknowledgments

I would like to thank Ming-Zhang for their help in sample collection.

## Authors' contributions

ML analyzed and interpreted the patient data and was a major contributor in writing the manuscript. All authors read and approved the final manuscript.

## Funding

No funding was received.

## Availability of data and materials

The datasets used and/or analyzed during the current study are available from the corresponding author on reasonable request.

## Ethics approval and consent to participate

Not applicable.

## Consent for publication

Not applicable.

## Competing interests

The authors declare that they have no competing interests.

Received: 12 September 2019 Accepted: 6 February 2020

Published online: 12 February 2020

## References

- Bradshaw AD. Evolutionary significance of phenotypic plasticity in plants. *Adv Genet.* 1965;13(1):115–55.
- Agrawal AA. Phenotypic plasticity in the interactions and evolution of species. *Science.* 2001;294:321–6.
- Engel K, Tollrian R, Jeschke JM. Integrating biological invasions, climate change and phenotypic plasticity. *Comm Integ Biol.* 2011;4(3):247–50.
- Rubio De Casas R, Vargas P, Pe'rez-Corona E, Manrique E, Quintana J, Garc'a-Verdugo C, Balaguer L. Field patterns of leaf plasticity in adults of the long-lived evergreen *Quercus coccoifera*. *Ann Bot.* 2007;100(2):325–34.
- Milne JM, Murphy KJ, Thomaz SM. Morphological variation in *Eichhornia azurea* (Kunth) and *Eichhornia crassipes* (Mart.) Solms in relation to aquatic vegetation type and the environment in the floodplain of the Rio Paran, Brazil. *Hydrobiologia.* 2006;570(1):19–25.
- Cordell S, Goldstein G, Mueller-Dombois D, Webb D, Vitousek PM. Physiological and morphological variation in *Metrosideros polymorpha*, a dominant Hawaiian tree species, along an altitudinal gradient: the role of phenotypic plasticity. *Oecologia.* 1998;113(2):188–96.
- Aitken SN, Yeaman S, Holliday JA, Wang T, Curtis-McLane S. Adaptation, migration or extirpation: climate change outcomes for tree populations. *Evol Appl.* 2008;1(1):95–111.

8. Hoffmann AA, Sgrò CM. Climate change and evolutionary adaptation. *Nature*. 2011;470(7335):479–85.
9. Alberto FJ, Aitken SN, Alía R, Gonzálezrto FJ, Z SC, Hänninen H, Kremer A, Lefèvre F, Lenormand T, Yeaman S, Whetten R, Savolainen O. Potential for evolutionary responses to climate change- evidence from tree populations. *Glob Change Biol*. 2013;19(6):1645–61.
10. Franks SJ, Weber JJ, Aitken SN. Evolutionary and plastic responses to climate change in terrestrial plant populations. *Evol Appl*. 2014;7(1):123–39.
11. Merilä J, Hendry AP. Climate change, adaptation, and phenotypic plasticity: the problem and the evidence. *Evol Appl*. 2014;7(1):1–14.
12. Beard JB. *Turfgrass: science and culture*. Englewood Cliffs: Prentice-Hall; 1973. p. 658
13. Taliaferro CM. Bermudagrass (*Cynodon* (L.) Rich). In: Casler MD, Duncan RR, editors. *Turfgrass biology, genetics and breeding*. New Jersey: Wiley; 2003. p. 235–257.
14. Harlan JR. Sources of variation in *Cynodon dactylon* (L.)Pers. *Crop Sci*. 1969; 9(6):774–8.
15. Holdaway RJ, Richardson SJ, Dickie IA, Peltzer DA, Coomes DA. Species- and community-level patterns in fine root traits along a 120000-year soil chronosequence in temperate rain forest. *J Ecol*. 2011;99(4):954–63.
16. Lambers H, Brundrett MC, Raven JA, Hopper SD. Plant mineral nutrition in ancient landscapes: high plant species diversity on infertile soils is linked to functional diversity for nutritional strategies. *Plant Soil*. 2010;334(1–2):11–31.
17. Overgaard J, Kristensen TN, Mitchell KA, Hoffmann AA. Thermal tolerance in widespread and tropical drosophila species: does phenotypic plasticity increase with latitude? *Am Nat*. 2011;178(1):80–96.
18. Ayana A, Bekele E. Geographical patterns of morphological variation in sorghum (*Sorghum bicolor* (L.) Moench) germplasm from Ethiopia and Eritrea: quantitative characters. *Euphytica*. 2000;115(2):91–104.
19. Li CY, Zhang XJ, Liu XL, Luukkanen O, Berninger F. Leaf morphological and physiological responses of quercus aquifolioides along an altitudinal gradient. *Silva Fennica*. 2006;40(1):5–13.
20. Chang SW, Hsiao JY. Altitudinal genetic differentiation and diversity of Taiwan Lily (*Lilium longiflorum* var. *formosanum*; Liliaceae) using RAPD markers and morphological characters. *Int J Plant Sci*. 2001;162(2):287–295.
21. Janzen DH. Why mountain passes are higher in the tropics. *Am Nat*. 1967; 101(919):233–49.
22. Stevens GC. The latitudinal gradient in geographical range: how so many species coexist in the tropics. *Am Nat*. 1989;133(2):240–56.
23. El ZA, Benhassaini H. Morphological leaf variability in natural populations of *Pistacia atlantica* Desf. Subsp. *atlantica* along climatic gradient: new features to update *Pistacia atlantica* subsp. *atlantica* key. *Int J Biometeorol*. 2016;60(4):577–89.
24. Lü XM, Zhou G, Wang Y, Song XL. Effects of changing precipitation and warming on functional traits of zonal Stipaplants from inner Mongolian grassland. *Acta Meteorologica Sinica*. 2016;30(3):412–25.
25. Shi XY. Regional climate meridional and zonal feature in China. China: Chinese academy of meteorological science; 2004.
26. Gatschet MJ, Taliaferro CM, Anderson J, Porter DR, Anderson MP. Cold acclimation and alterations in protein synthesis in bermudagrass crowns. *J Am Soc Hortic Sci*. 1994;119(3):477–80.
27. Taliaferro CM. Diversity and vulnerability of Bermuda turf-grass species. *Crop Sci*. 1995;35(2):327–31.
28. Rochecouste E. Studies on the biotypes of *Cynodon dactylon* botanical investigation. *Weed Res*. 1962;2:1–23.
29. Harlan JR, JMJD W, Huffine WW, Deakin JR. A guide to the species of *Cynodon* (Gramineae). *Bull Okla Agric Exp Stn Stillwater*. 1970;B673:1–37.
30. Potenza G, Fascetti S, Castronuovo D, Lovelli S, Perniola M, Viggiani R, Rossi R, Marchione V, Candido V. Collection and preliminary characterisation of native turfgrass accessions of *Cynodon dactylon* L. in the Mediterranean area. *J Food Agric Environ*. 2014;1212(2):770–4.
31. Zhang JX, Wang ML, Guo ZP, Guan YZ, Guo YX, Yan XB. Variations in morphological traits of bermudagrass and relationship with soil and climate along latitudinal gradients. *Hereditas*. 2018;155(1):31.
32. Lu RK. *Chemical analysis method of agricultural soil*. China: China agricultural science press; 2000. p. 106–7.
33. Soolanayakanahally RY, Guy RD, Silim SN, Song M. Timing of photoperiodic competency causes phenological mismatch in balsam poplar (*Populus balsamifera* L.). *Plant Cell Environ*. 2013;36(1):116–27.
34. Cooke JEK, Eriksson ME, Junntila O. The dynamic nature of bud dormancy in trees: environmental control and molecular mechanisms. *Plant Cell and Environ*. 2012;35(10):1707–28.
35. Anway LGHC. A morphological and chemical analysis of geographical variation in *Tilia* L. of eastern North America. *Brittonia*. 1972;24(1):2–8.
36. Naïma AA, Asbahani E, El Alem Y, El Finti A, Msanda F, El Mousadik A. Variation in oil content and fatty acid composition in preselected argan trees with morphological characters and geographical localization. *Med J Nutrition Metab*. 2013;6(3):217–25.
37. Antigoni K, Catarina P, Martínez-Freiria F. Where does diversity come from? Linking geographical patterns of morphological, genetic, and environmental variation in wall lizards. *BMC Evol Biol*. 2018;18(1):124.
38. Wofford DS. Heritability estimates for turfgrass characteristics in bermudagrass. *Crop Sci*. 1985;25(1):133–6.
39. Liu JX, Guo AG, Guo HL. Morphological variation and types of *Cynodon dactylon*. *Acta Pratacultural Sci*. 2003;12(6):99–104.
40. Reazor EH, Brosnan JT, Staton ME, Lane T, Trigiano RN, Wadl PA, Conner JA, Schwartz BM. Genotypic and phenotypic evaluation of off-type grasses in hybrid Bermudagrass [*Cynodon dactylon* (L.) Pers.xC. *transvaalensis* Burt-Davy] putting greens using genotyping-by-sequencing and morphological characterization. *Hereditas*. 2018;155(1):8.
41. Akbari M, Salehi H, Niazi A. Evaluation of diversity based on morphological variabilities and ISSR molecular markers in Iranian *Cynodon dactylon* (L.) Pers. accessions to select and introduce cold-tolerant genotypes. *Mol Biotechnol*. 2018;60(4):259–70.
42. Wang RZ, Gao Q. Photosynthesis, transpiration and water use efficiency in two divergent *Leymus chinensis* populations from North-Eastern China. *Photosynthetica*. 2001;39(1):123–6.
43. Wang RZ, Ripley EA, Zu YG, Nie SQ. Demography of reproductive and biomass allocation of grassland and dune *Leymus chinensis* on the Songnen plain, North-Eastern China. *J Arid Environ*. 2001;49(2):289–99.
44. Wang R, Gao Q. Morphological responses of *Leymus chinensis* (Poaceae) to the large-scale climatic gradient along the north-East China transect (NECT). *Divers Distrib*. 2004;10(1):65–73.
45. Kongkiatngam P, Waterway MJ, Fortin MG, Coulman BE. Genetic variation within and between two cultivars of red clover (*Trifolium pratense* L.): comparison of morphological, isozyme, and RAPD markers. *Euphytica*. 1995; 84(3):355–61.
46. Julier B, Huyghe C, Ecalle C. Within- and among cultivar genetic variation in alfalfa: forage quality, morphology, and yield. *Crop Sci*. 2000;40:365–9.
47. Bolanos-Aguilar ED, Huyghe CH, Julier B, Ecalle CH. Genetic variation for seed yield and its components in alfalfa (*Medicago sativa* L.) populations. *Agronomie*. 2002;20(3):333–46.
48. Rawat K, Bakshi M. Provenance variation in cone, seed and seedling characteristics in natural populations of *Pinus wallichiana* a.B. jacks (blue pine) in India. *Ann For Res*. 2011;54(1):39–55.
49. Rehfeldt GE. A model of genetic variation for *Pinus ponderosa* in the inland northwest (USA): applications in gene resource management. *Can J For Res*. 1991;21(10):1491–500.
50. Ellison AM, Buckley HL, Miller TE, Gotelli NJ. Morphological variation in *Sarracenia purpurea* (Sarraceniaceae): geographic, environmental, and taxonomic correlates. *Am J Bot*. 2004;91(11):1930–5.
51. Kondo M, Pablico PP, Aragones DV, Agbisit R, Abe J, Morita S, Courtois B. Genotypic and environmental variations in root morphology in rice genotypes under upland field conditions. *Plant Soil*. 2003;255(1):189–200.
52. Houehanou TD, Prinz K, Hellwig F, Assogbadjo AE, Gebauer J, Glele Kakaï RL, Sinsin B. Morphological trait variation and relationships of *Azizelia africana* Sm. Caused by climatic conditions and anthropogenic disturbance in Benin (West Africa). *Genet Resour Crop Evol*. 2019;66(5):1091–105.
53. Hounkpevi A, Azihou AF, Kouassi EK, Porembski S, Glèlè KR. Climate-induced morphological variation of black plum (*Vitex doniana* Sw.) in Benin, West Africa. *Genet Resour Crop Evol*. 2016;63(3):1073–84.
54. Loidi J. Plant eco-morphological traits as adaptations to environmental conditions: some comparisons between different biomes across the world. *Geographical changes in vegetation and plant functional types*. Cham: Springer; 2018. p. 59–71.
55. Bejiga G, Tsegaye S, Tullu A, Erskine W. Quantitative evaluation of Ethiopian landraces of lentil (*Lens culinaris*). *Genet Resour Crop Evol*. 1996;43(4):293–301.
56. Robertson GP, Vitousek PM. Nitrification potentials in primary and secondary succession. *Ecology*. 1981;62(2):376–86.
57. Vitousek PM, Matson PA, Cleve KV. Nitrogen availability and nitrification during succession: primary, secondary, and old-field seres. *Plant Soil*. 1989; 115(2):229–39.

58. Jian N. Carbon storage in terrestrial ecosystems of China: estimates at different spatial resolutions and their responses to climate change. *Clim Chang.* 2001;49(3):339–58.
59. Post WM, Izaurrealde RC, Mann LK, Bliss N. Monitoring and verifying changes of organic carbon in soil. *Clim Chang.* 2001;51(1):73–99.
60. Okello J, Okullo JBL, Eilu G, Nyeko P, Obua J. Morphological variations in *Tamarindus indica* LINN. Fruits and seed traits in the different agroecological zones of Uganda. *Int J Ecol.* 2018;99:9–21.
61. Volis S, Mendlinger S, Olsvig-Whittaker L, Safriel UN, Orlovsky N. Phenotypic variation and stress resistance in core and peripheral populations of *Hordeum spontaneum*. *Biodivers Conserv.* 1998;7(6):799–813.
62. Rusanen M, Vakkari P, Blom A. Genetic structure of *Acer platanoides* and *Betula pendula* in northern Europe. *Can J For Res.* 2003;33(6):1110–5.
63. Muona O, Paule L, Szmidt AE, Kärkkäinen K. Mating system analysis in a central and northern European population of *Picea abies*. *Scand J Forest Res.* 1990;5(1–4):97–102.
64. Barrett SCH, Husband BC. The genetics of plant migration and colonization. In: Brown AHD, Clegg MT, Kahler AL, Weir BS, editors. *Plant population genetics, breeding and genetic resources*. Sunderland: Sinauer Associates; 1989. p. 254–77.
65. Walter R, Epperson BK. Geographic pattern of genetic diversity in *Pinus resinosa*: contact zone between descendants of glacial refugia. *Am J Bot.* 2005;92:92–100.
66. Mägi M, Semchenko M, Kalamees R, Zobel K. Limited phenotypic plasticity in range-edge populations: a comparison of co-occurring populations of two *Agrimonia* species with different geographical distributions. *Plant Biol.* 2011;13(1):177–84.

## Publisher's Note

Springer Nature remains neutral with regard to jurisdictional claims in published maps and institutional affiliations.

**Ready to submit your research? Choose BMC and benefit from:**

- fast, convenient online submission
- thorough peer review by experienced researchers in your field
- rapid publication on acceptance
- support for research data, including large and complex data types
- gold Open Access which fosters wider collaboration and increased citations
- maximum visibility for your research: over 100M website views per year

**At BMC, research is always in progress.**

Learn more [biomedcentral.com/submissions](https://biomedcentral.com/submissions)

